



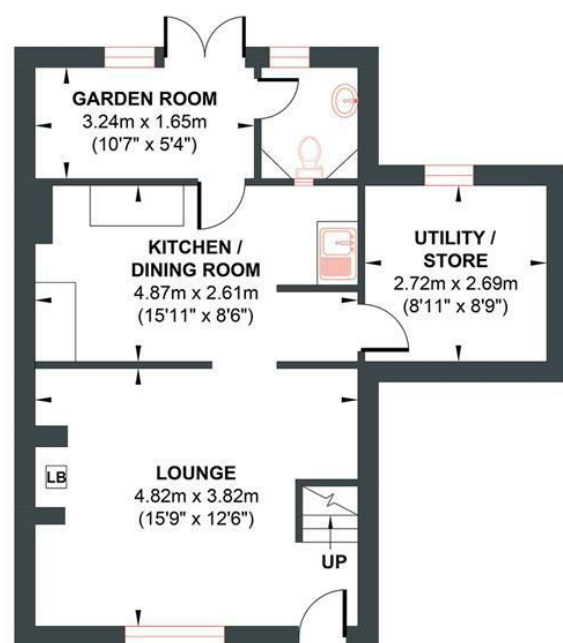
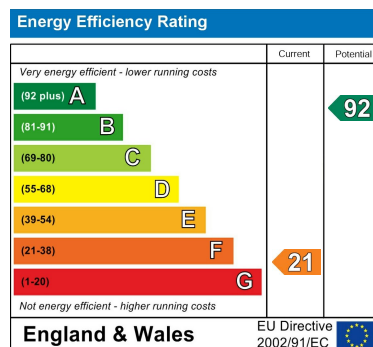
Ashurst, BN44 3AY

Nestled in the charming village of Ashurst, this delightful three-bedroom house with Garage and car port on School Lane offers a perfect blend of character and modern living. Built in 1898, the property boasts a rich history while providing all the comforts of contemporary life. Spanning an impressive 958 square feet, this home features a welcoming reception room, ideal for both relaxation and entertaining, complete with a cosy log burner that adds warmth and charm during the colder months.

The well-appointed kitchen leads to the south facing conservatory. Off the kitchen there is large store room suitable for washing machine, dryer or Logs ensuring that household chores are easily managed. The property includes a beautifully designed bathroom, featuring a luxurious roll-top bath, perfect for unwinding after a long day. Each of the two bedrooms are generously sized, providing ample space for family or guests. The property also has a dressing/study room for extra space.

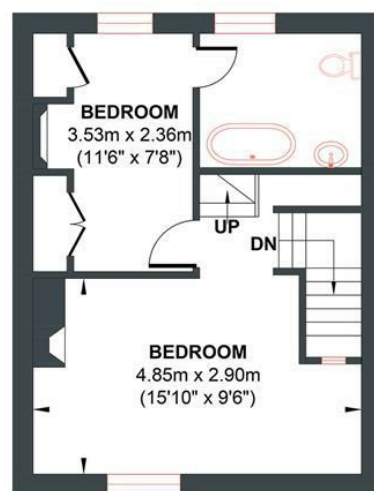
With its blend of period features and modern amenities, this house on School Lane is a rare find. Whether you are a first-time buyer or seeking a family home, this property is sure to impress. Don't miss the opportunity to make this charming residence your own.

- End of Chain
- Detached garage and car port
- Heart of the village
- Two bedrooms
- Log Burner
- Victorian Cottage
- South facing conservatory
- Study/Dressing room



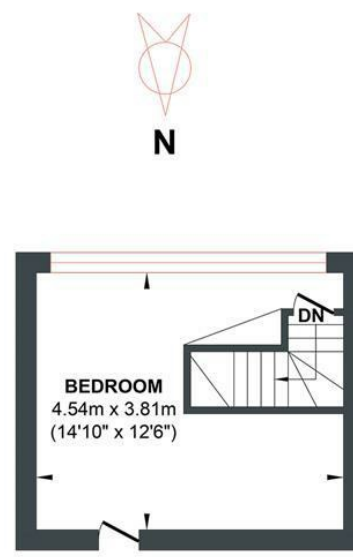
GROUND FLOOR

Approximate Floor Area
503.53 sq ft
(46.78 sq m)



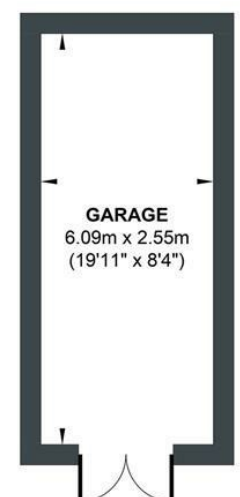
FIRST FLOOR

Approximate Floor Area
340.89 sq ft
(31.67 sq m)



SECOND FLOOR

Approximate Floor Area
186.21 sq ft
(17.30 sq m)



GARAGE

Approximate Floor Area
167.16 sq ft
(15.53 sq m)

Foster & Co and their clients give notice that:

These sales particulars do not constitute any part of an offer of contract and are for guidance for prospective purchases only and should be not relied upon as a statement of fact.

We are not to be held responsible for material information that has not been given to us by our client at the time of marketing.

All measurements are approximate

